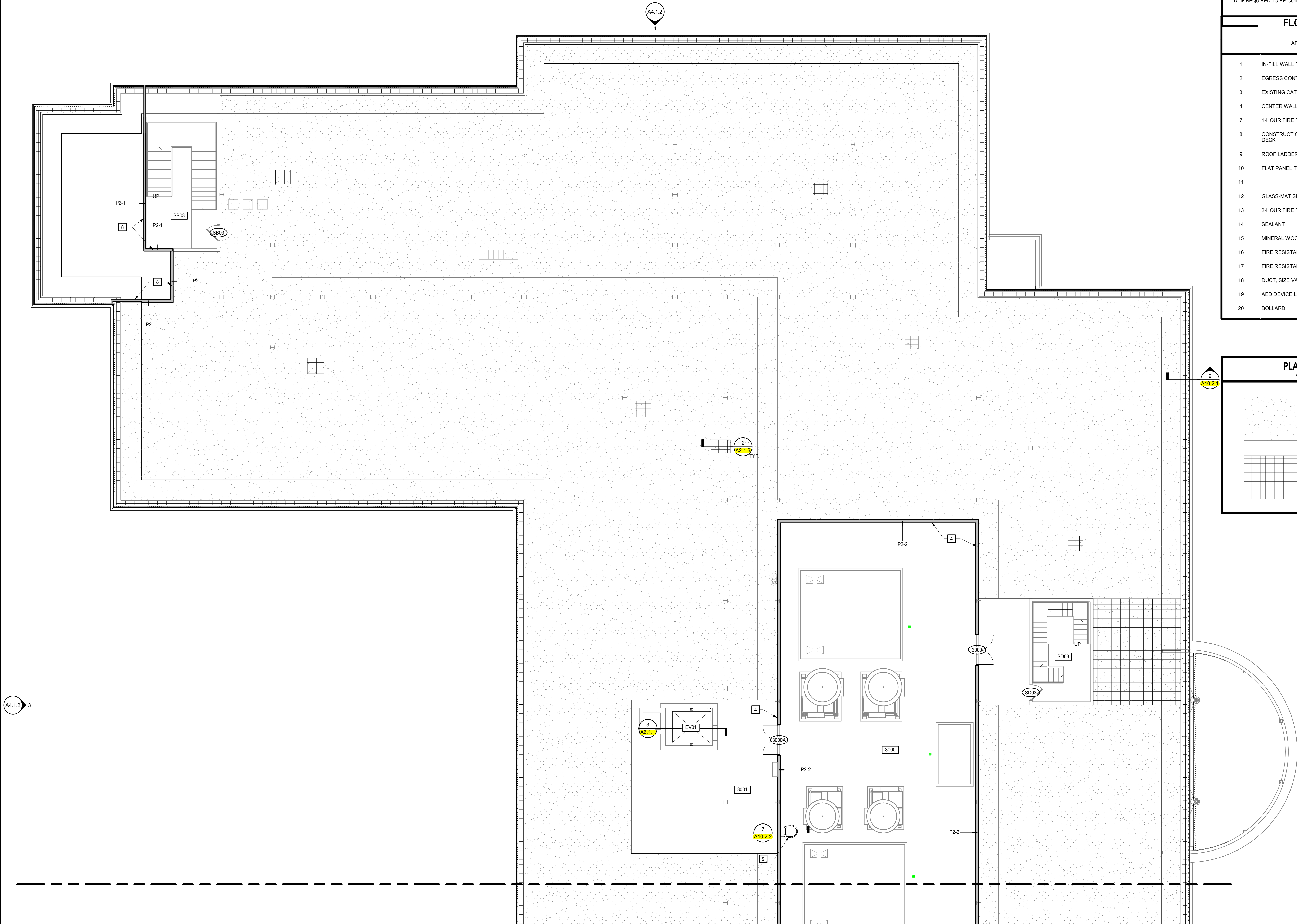
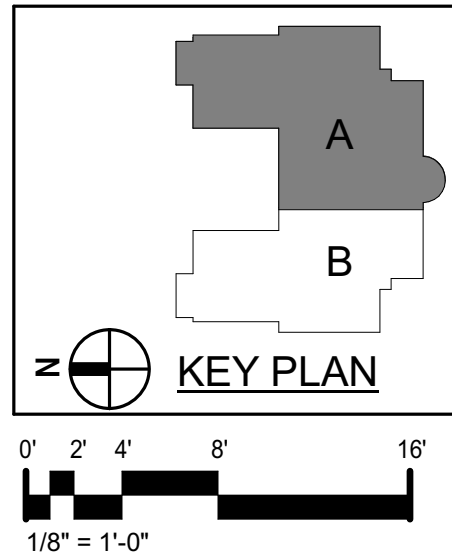


3/27/2019 9:59:45 AM



ATTIC FLOOR - ENLARGED AREA A

1/8" = 1'-0"



GENERAL NOTES

- A. INSTALL 2"x2"x5" SURFACE MOUNTED CORNER GUARDS ON ALL OUTSIDE CORNERS IN CORRIDORS.
- B. ALL OVERHEAD OBSTRUCTIONS IN ATTIC SPACE LOCATED LESS THE 6'-8" ABOVE FINISHED FLOOR SHALL HAVE SAFETY YELLOW PAINT OR ADHERED STICKER STRIPING.
- C. LABEL ALL FIRE RESISTANCE RATED WALLS WITH 3" TALL RED STENCILED LETTERING TO READ "FIRE BARRIER - PROTECT ALL OPENINGS" AND SPACE MAX 15 FEET APART.
- D. IF REQUIRED TO RE-CONSTRUCT SECOND FLOOR SHAFTS, USE WALL TYPE P7-2

FLOOR PLAN KEYNOTES

REPRESENTED BY [A]  
APPLIES TO DRAWINGS A2.1.1 - A2.1.6

- 1 IN-FILL WALL FLUSH TO MATCH ADJACENT
- 2 EGRESS CONTROL SWING GATE
- 3 EXISTING CATWALK
- 4 CENTER WALL ON EXISTING CURB
- 7 1-HOUR FIRE RESISTANCE RATED HORIZONTAL CONSTRUCTION
- 8 CONSTRUCT ON EXISTING WALL BELOW, EXTEND TO UNDERSIDE OF ROOF DECK
- 9 ROOF LADDER WITH SAFETY CAGE
- 10 FLAT PANEL TV, OFCI
- 11
- 12 GLASS-MAT SHEATHING ASSEMBLY, REFER TO STRUCTURAL
- 13 2-HOUR FIRE RESISTANCE RATED HORIZONTAL ASSEMBLY
- 14 SEALANT
- 15 MINERAL WOOL
- 16 FIRE RESISTANCE RATED SEALANT
- 17 FIRE RESISTANCE RATED DUCT WRAP, SEE MECHANICAL
- 18 DUCT, SIZE VARIES
- 19 AED DEVICE LOCATION
- 20 BOLLARD

PLAN LEGEND AND NOTES

APPLIES TO DRAWINGS A2.1.5 - A2.1.6

- EXTENT OF HORIZONTAL EXTERIOR GLASS-MAT SHEATHING ASSEMBLY, REFER TO STRUCTURAL DRAWINGS FOR DETAILS
- EXTENT OF HORIZONTAL EXTERIOR GLASS-MAT SHEATHING ASSEMBLY, REFER TO STRUCTURAL DRAWINGS FOR DETAILS

MOSELEYARCHITECTS

911 N. WEST STREET, SUITE 205 RALEIGH, NORTH CAROLINA 27603  
PHONE (919) 845-0691  
MOSELEYARCHITECTS.COM

PROGRESS  
PRINT NOT FOR  
CONSTRUCTION  
MOSELEYARCHITECTS

MOSELEY J. LOCKE  
ARCHITECT  
52282  
NORTH CAROLINA  
REGISTERED PROFESSIONAL ARCHITECT

Dobo Hall Renovation - Package A

SCO PROJECT NO. 18-19798-01A

UNC Wilmington

4978 CAHILL DR, WILMINGTON, NC 28403

PROJECT NO.	DATE
580999	MARCH 27, 2019
REVISIONS	
DATE	DESCRIPTION

ATTIC FLOOR PLAN  
- AREA A

A2.1.5